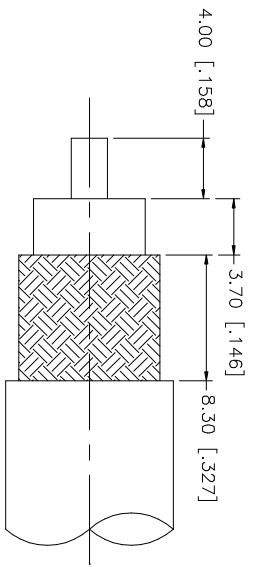
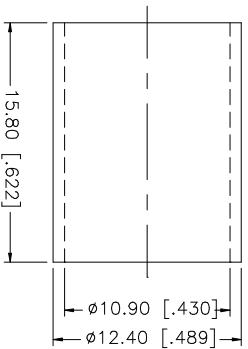
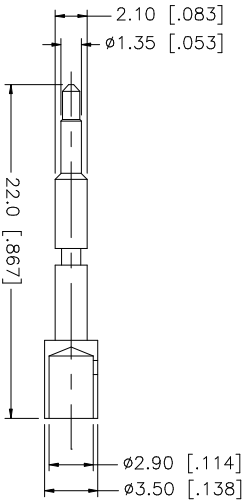
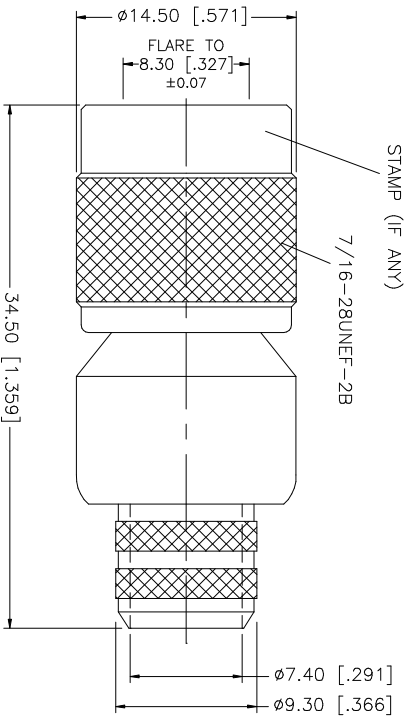


REV.	DATE	DESCRIPTION
A	01/15/04	UPDATE DRAWING FORMAT



RECOMMENDED CABLE STRIPPING DIMENSIONS



- NOTE:
1. CRIMPED FERRULE  
HEX CRIMP SIZE .429"
  2. CONTACT PIN TO SOLDER  
OR .118" HEX CRIMP

9																					
8																					
7																					
6																					
5																					
4	FERRULE	COPPER	NICKEL	1																	
3	CONTACT PIN	PHOS. BRONZE	GOLD	1																	
2	INSULATOR	TEFLON	NATURAL	1																	
1	BODY	BRASS	NICKEL	1																	
	DESCRIPTION	MATERIAL	FINISH	QTY																	
											UNLESS OTHERWISE SPECIFIED DIMENSIONS ARE IN MILLIMETERS. DIMENSIONS IN [ ] ARE IN INCHES AND FOR CUSTOMER REFERENCE ONLY. TOLERANCES FOR MILLIMETERS ARE: 0.5 - 8mm ± 0.20mm 8 - 30mm ± 0.40mm 30 - 120mm ± 0.50mm UNLESS OTHERWISE SPECIFIED TOLERANCES FOR INCHES ARE: .020 - .315 = ± 0.007" .315 - 1.180 = ± 0.015" 1.180 - 4.724 = ± 0.020"										
											DO NOT SCALE DRAWING										
APPROVALS					DATE																
DRAWN G.R.S.					01/15/04																
CHECKED																					
ISSUED																					
SHEET 1 OF 1																					
CAD FILE C:/122/122393.DWG											DWG. NO. 122393.DWG										
											REV. A										
											SIZE A										
											SCALE NA										
											PART DESCRIPTION TNC CRIMP PLUG (FOR BELDEN 8214, 9913, 9914 CABLE) 122393										
<b>Amphenol Connex</b>																					